

MIIX 520 (12)

AN ELEGANT 2-IN-1 THAT IS SMARTER THAN EVER

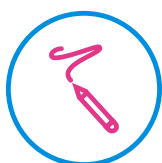
Extremely portable and flexible, the Lenovo™ Miix 520 is designed to fit every mood. Feeling creative? Grab the Lenovo Active Pen 2 and write or draw directly on screen—even editing 3D objects scanned from your surroundings. Need to simplify your day? Let Cortana help – she can now respond to your commands from 4 meters away. Fancy some downtime? Detach the keyboard and the Miix 520 becomes a 12" multimedia-rich tablet with stunning display and crisp sound. Add powerful Quad-Core processing and LTE, and Miix is your perfect companion for every situation.

WHY YOU SHOULD BUY THE LENOVO MIIX 520 (12)



Intuitive versatility

Sleeker than ever, the Miix 520 is whisper thin and effortlessly portable. Feature a modern one-piece aluminum alloy body in two sophisticated colors, 256 individual pieces to complete the unique watchband hinges providing strength and flexibility, and the ergonomic keyboard doubles as a folio case to protect your screen when you're on the move



Boundless creativity

Lenovo Active Pen 2 and Windows Ink open up a world of creativity and time-saving shortcuts. With a few strokes of the pen on screen, you will be able to post updates and comments on social media, reply to emails, generate directions in Bing Maps, and so much more. Furthermore, with the optional WorldView camera, you can now scan 3D objects, edit them, overlay them on top of a 2D photo, re-arrange their shape—and even send them to a 3D printer. It's never been easier to create, capture and share.

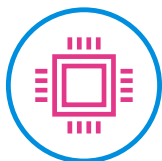


Lenovo™



Life hacking spirit

The Miix 520 comes equipped with optional fingerprint reader for faster and safer login. And your voice-activated digital assistant—Cortana is prepared to answer your questions, open apps, set reminders from across the room.



Cutting-edge performance

The Miix 520 delivers unprecedented power for a 2-in-1. Featuring the latest Intel® Quad-Core processor and up to 1 TB PCIe SSD storage, you'll enjoy exceptional performance and responsiveness, plus lightning-fast boot-ups and transfer times, anywhere. In addition, with up to 16 GB of memory, you'll be able to run more apps, larger programs, and bigger files—without fear of your Miix 520 lagging.



WWW.LENOVO.COM

Miix 520 (12)

SPECIFICATIONS

Lenovo™ Miix 520-12IKB*

PERFORMANCE

Processor

8th Generation Intel® Quad-Core i7 Processor
8th Generation Intel® Quad-Core i7 Processor
7th Generation Intel® Core™ i3 Processor

Operating System

Windows 10 Home or Windows 10 Pro

Graphics

i7/i5 : Intel® UHD Graphics 620
i3 : Intel® HD Graphics 520 or 620

Camera

Front: 5 MP Auto-Focus
Rear : 5 MP Auto-Focus;
8 MP Auto-Focus WorldView Camera¹

Microphone

2 x Front Microphone
2 x Side Microphone

Memory

4 GB/ 8 GB/ 16 GB DDR4

Storage

128 GB/ 256 GB/ 512 GB/ 1 TB PCIe SSD

Audio

2 x Speakers, Dolby Audio™

Battery

Up to 8 Hours² (MobileMark 2014)

¹ Optional.

² All battery life claims are approximate and based on test results using the MobileMark® 2014 ver 1.5 battery life benchmark test. Actual results will vary, and depend on numerous factors including product configuration and usage, software, operating conditions, wireless functionality, power management settings, screen brightness and other factors. The maximum capacity of the battery will naturally decrease with time and usage. See <https://bapco.com/products/mobilemark-2014/> for additional details.

³ WiFi SKU.

⁴ LTE SKU.

DESIGN

Display

12.2" FHD (1920 x 1200) IPS Touchscreen

Form Factor

2-in-1 Detachable

Dimensions (W x D x H)

Tablet
(mm) : 300 x 205 x 9.9
(inches) : 11.81" x 8.07" x 0.39"

With Keyboard

(mm) : 300 x 205 x 15.9
(inches) : 11.81" x 8.07" x 0.62"

Thickness (mm / inches)

Tablet : 9.9 / 0.39"
With Keyboard: 15.9 / 0.62"

Weight

Tablet : Starting at 1.94 lbs (880 g)
With Keyboard: Starting at 2.78 lbs (1.26 kg)

Keyboard

Backlight¹, 1.5 mm Travel

Touchpad

PTP with Glass Cover

Colors

Platinum
Iron Gray

Unique Features

Windows Hello via Fingerprint Reader¹
Cortana with Far-Field Microphone
Window 3D to Interact with 3D Objects¹
Lenovo Digital Pen¹
LTE¹

CONNECTIVITY

WLAN

Up to 2 x 2 WiFi 802.11 ac

LTE

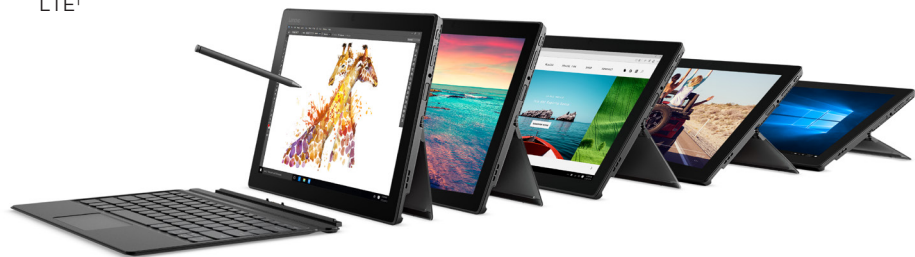
Yes¹

Connectors

1 x USB Type-C™
1 x USB 3.0
Audio Combo Jack
SD Card Reader³
SIM Card Slot⁴

PRELOADED SOFTWARE

- Lenovo App Explorer
- Lenovo Companion 3.0 – Driver Update
- Lenovo ID
- Lenovo Settings
- McAfee LiveSafe™ (30-day trial)
- Microsoft Office 365 (30-day trial)



LENOVO SERVICES

Warranty Upgrades – On-site/ In-Home Service

Maximizes PC uptime and productivity by providing convenient, fast repair services in your own home.

Accidental Damage Protection

Avoid the hassles of unexpected repair costs. Provides coverage for non-warranted damage incurred under normal operating conditions, such as minor spills, drops or damage to the integrated screen.

Warranty Extensions (1-to-3 Years Total Duration)

This fixed-term, fixed-cost service helps accurately budget for PC expenses, protect your valuable investment and potentially lower the cost of ownership over time.

* Example of Lenovo
Miix catalogue
naming convention



Intel® platform codes

Apollo Lake: IAP, Broadwell: IBD, Braswell: IBR, Broadwell: IBW, Baytrail: IBY, Cannonlake: ICN, Haswell: IHH, Kabylake: IKB, Skylake H: ISH, Skylake: ISK, Skylake U: ISU, Skylake Y: ISY, Skylake Z: ISZ

OPTIONS & ACCESSORIES



Lenovo
Active Pen 2



Lenovo USB-C SSD



Lenovo
Yoga™ Mouse



WWW.LENOVO.COM

Lenovo reserves the right to alter product offerings and specifications at any time, without notice. Lenovo makes every effort to ensure accuracy of all information but is not liable or responsible for any editorial, photographic or typographic errors. All images are for illustration purposes only. For full Lenovo product, service and warranty specifications visit www.lenovo.com. Lenovo makes no representations or warranties regarding third party products or services. **Trademarks:** The following are trademarks or registered trademarks of Lenovo: Lenovo, the Lenovo logo, ideapad, ideacentre, yoga and yoga home. Microsoft, Windows and Vista are registered trademarks of Microsoft Corporation. Ultrabook, Celeron, Celeron Inside, Core Inside, Intel, Intel Logo, Intel Atom, Intel Atom Inside, Intel Core, Intel Inside, Intel Inside Logo, Intel vPro, Itanium, Itanium Inside, Pentium, Pentium Inside, vPro Inside, Xeon, Xeon Phi, and Xeon Inside are trademarks of Intel Corporation in the U.S. and/or other countries. Other company, product and service names may be trademarks or service marks of others. Battery life (and recharge times) will vary based on many factors including system settings and usage. Visit www.lenovo.com/lenovo/us/en/safecomp/ periodically for the latest information on safe and effective computing. ©2017 Lenovo. All rights reserved.



Lenovo™